

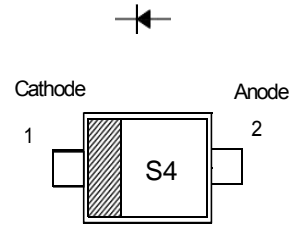


### 1N5819WT Surface Mount Schottky Barrier Diodes

#### Features

- Low Forward Voltage

**MARKING:** S4



SOD-523

#### Absolute Maximum Ratings (T<sub>a</sub> = 25 °C)

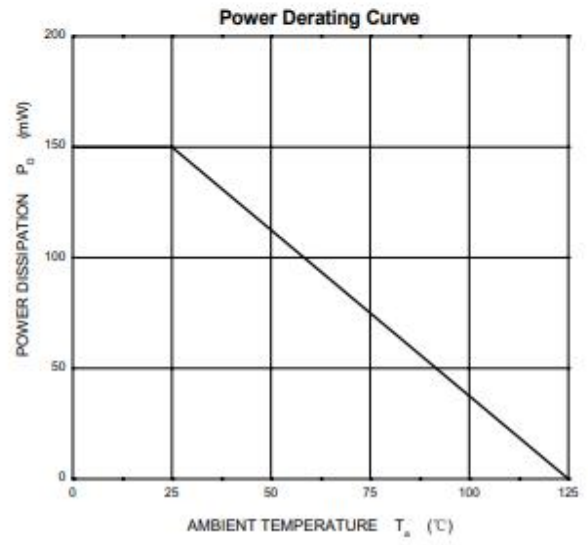
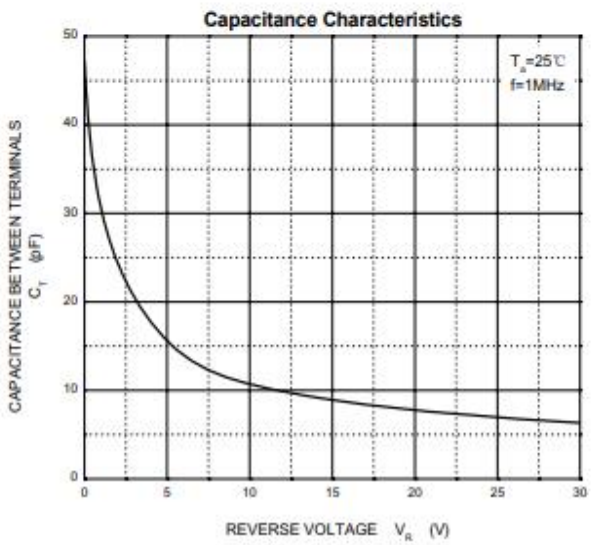
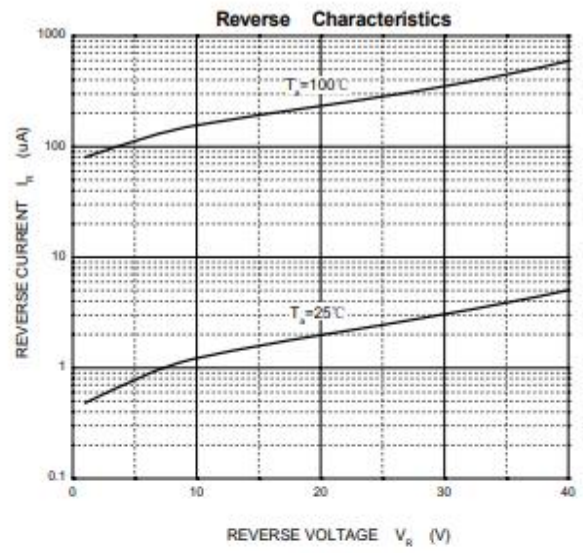
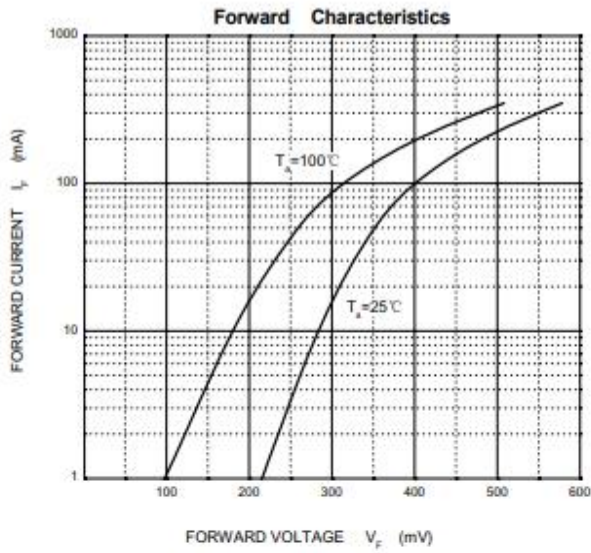
Parameter	Symbol	Value	Unit
Peak Repetitive Reverse Voltage	V <sub>RRM</sub>	40	V
Reverse Voltage	V <sub>R</sub>	40	V
Average Forward Rectified Current	I <sub>F(AV)</sub>	350	mA
Non-Repetitive Peak Forward Surge Current at t = 1 s	I <sub>FSM</sub>	2	A
Power Dissipation	P <sub>tot</sub>	200	mW
Operating and Storage Temperature Range	T <sub>j</sub> , T <sub>stg</sub>	- 65 to + 125	°C

#### Characteristics at T<sub>a</sub> = 25 °C

Parameter	Symbol	Min.	Typ.	Max.	Unit
Reverse Breakdown Voltage at I <sub>R</sub> =10uA	V <sub>(BR)R</sub>	40	-	-	V
Reverse Leakage Current at V <sub>R</sub> =30V	I <sub>R</sub>	-	-	5	μA
Forward Voltage at I <sub>F</sub> = 20 mA at I <sub>F</sub> = 200 mA	V <sub>F</sub>	-	-	0.37 0.6	V
Total Capacitance at V <sub>R</sub> = 0 V, f = 1 MHz	C <sub>T</sub>	-	50	-	pF
Reverse Recovery Time at I <sub>F</sub> = I <sub>R</sub> = 200 mA, I <sub>rr</sub> = 0.1 I <sub>R</sub> , R <sub>L</sub> = 100 Ω	t <sub>rr</sub>	-	10	-	ns



## Typical Characteristics

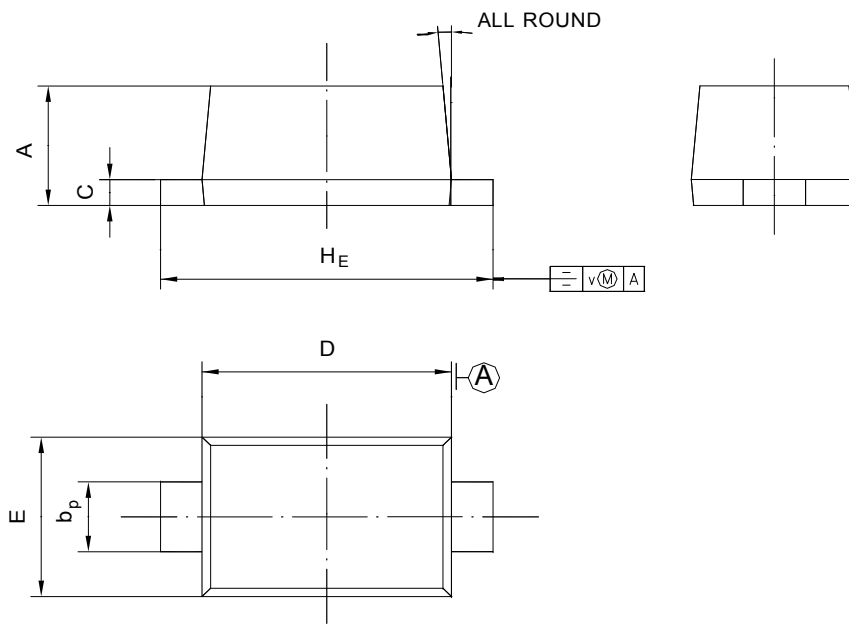




**PACKAGE OUTLINE**

Plastic surface mounted package; 2 leads

SOD-523



UNIT	A	b <sub>p</sub>	C	D	E	H <sub>E</sub>	V	∠
mm	0.68 0.58	0.4 0.3	0.135 0.100	1.25 1.15	0.85 0.75	1.7 1.5	0.1	5°